



ALLE
PROCESSING

PASSOVER
2025
PRODUCT
GUIDE ESTD 1946





INDEX

| INSTITUTIONAL / HOSPITAL MEALS

FROZEN DINNERS	4
BREAKFAST ITEMS	4
BROTH ITEMS	4

| FOOD SERVICE

FROZEN MEALS	5
FRANKS	5

| BULK

LIVER	6
KUGELS	6
DELI	7-9

| RETAIL

FROZEN FOOD	10
FAMILY PACKS	11-12
MON CUISINE	13
KUGELS	14
KISHKE	14
FROZEN RAW BEEF	15
AMAZING MEALS	16
DELI	18-19
SPECIALTY	20
FRANKS	21

GOURMET DINNERS (Blue Label)

Roast Chicken
with Potato Pudding
& Carrot Tzimmes

6 per case / 12 oz ea.

P-MMRCG



Boiled Chicken
with Potatoes &
Garden Vegetables

6 per case / 12 oz ea.

P-MMBCG



Roast Turkey
with Sweet Potatoes &
Seasoned Broccoli

6 per case / 12 oz ea.

P-MMRTG



Pot Roast Of Beef
with Whipped Potatoes
& Seasoned Carrots

6 per case / 12 oz ea.

P-MMPRG



Boiled Beef In Sauce
with Potatoes &
Garden Vegetables

6 per case / 12 oz ea.

P-MMBBG



Salisbury Steak
with Whipped Potatoes
& Eggplant Creole

6 per case / 12 oz ea.

P-MMSSG



Filet Of Sole
with Whipped Potatoes
& Carrots

6 per case / 12 oz ea.

P-MMFSG



DIET DINNERS (Orange Label)

Roast Chicken
with Potatoes &
Carrot Tzimmes

6 per case / 12 oz ea.

P-MMRCD



Roast Turkey
with Sweet Potatoes
& Broccoli

6 per case / 12 oz ea.

P-MMRTD



Pot Roast of Beef
with Whipped Potatoes
& Seasoned Carrots

6 per case / 12 oz ea.

P-MMPRD



Salisbury Steak
with Whipped Potatoes
& Eggplant Creole

6 per case / 12 oz ea.

P-MMSSD



Filet Of Sole
with Whipped Potatoes
& Carrots

6 per case / 12 oz ea.

P-MMFSD



Pureed Chicken
with Whipped Potatoes
& Carrots

6 per case / 12 oz ea.

P-MMPCD



Pureed Beef
with Whipped Potatoes
& Carrots

6 per case / 12 oz ea.

P-MMPBD



Breakfast Items

Plain Omelet

12 per case / 4 oz ea.

P-ALMSO



Cheese Omelet

12 per case / 4 oz ea.

21-PCO



Broth Items

Chicken Broth

12 per case / 8 oz ea.

P-MMCKBRD



Chicken Broth

with Matzo Ball, Non Gebrochtz

12 per case / 8 oz ea.

P-MMCKBRMBD





Raw Salisbury Steak

Approx. 40 pc / 10 lb case
51-PRSS



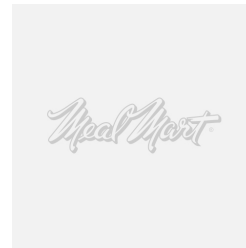
Beef Meatballs (IQF)

Approx. 160 pcs / 10 lb case
21-PMB10



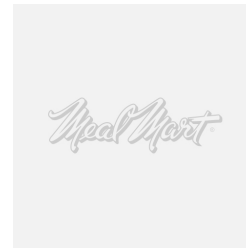
Stuffed Cabbage 6 Oz Dry (Raw)

75-80 pcs / 30 lb per case
22-CABRAW



Fried Chicken / Turkey Nuggets

10 lb case
22-CTNUG



Fried Chicken / Turkey Cutlets

Approx. 50 pcs / 10 lb case
71-PCTCUT



Raw Frozen Gefilte Fish

Approx. 8 per case / 3 lb ea. / 23 lb case
71-PGEFR



Fully Cooked Gefilte Fish (Frozen)

Approx. 8 per case / 3 lb ea. / 23 lb case
71-PGEFBF



Cocktail Franks (Frozen)

2 per case / 5 lb ea. / 10 lb case
70-PFBC



Beef Franks

8 Per Lb (40 per pack)
2 per case / 5 lb ea. / 10 lb case
70-PFB8



Bet Yosef Franks

8 Per Lb (40 per pack)
2 per case / 5 lb ea. / 10 lb case
70-PFB8BY



Franks

10 franks per lb. (50 per pack)
2 per case / 5 lb ea. / 10 lb case
70-PFB10



Knockwurst

5 Per Lb (25 per pack)
2 per case / 5 lb ea. / 10 lb case
70-PFB4



Bulk Liver



Kashered Chicken Liver

2 per case / 5 lb ea.

22-BCL10



Broiled Beef Livers

Approx. 10 lb case

71-PBLB



Meal Mart Chopped Liver

4 per case / 4.5 lb ea.
/ 18 lb case

21-CHLB



Mrs Schreiber Chopped Liver

4 per case / 4.5 lb ea.
/ 18 lb case

P-SCHCLP



Chopped Chicken Liver

4 per case / 4.5 lb ea.
/ 18 lb case

21-CCL



Bulk Retail



Stuffed Cabbage With Beef

4 per case / 6 lb ea. / 24 lb case

22-SCBPS



Stuffed Pepper with Beef

4 per case / 6 lb ea. / 24 lb case

22-SPBPS



Matzo Balls (Schreiber)

4 per case / 4 lb ea. / 16 lb case

P-SCHMBPS



Potato Kugel

2 per case / 4 lb ea. / 8 lb case

20-PKPPS



Apple Kugel

2 per case / 4 lb trays / 8 lb case

20-AKPS



Broccoli Kugel

2 per case / 4 lb trays / 8 lb case

20-BKPS



Sweet Potato Kugel

2 per case / 4 lb trays / 8 lb case

20-SPPS



Chicken Soup

4 per case / 5 lb ea. / 20 lb case

21-CKS





BULK DELI



Wide Bologna

2 per case / approx. 5.5 lb ea.
/ 11 lb case

51-PMBOLC



0 51328 70246 6



Wide Salami

2 per case / approx. 5.5 lb ea.
/ 11 lb case

51-PMSALC



0 51328 70366 1



Long Salami

4 per case / approx. 4 lb ea.
/ 16 lb case

41-PJSALL



0 51328 71234 2



Roast Beef /Shoulder Pot Roast (Cooked)

2 per case / approx. 9 lb ea.
/ 18 lb case

71-PCPRB



0 51328 71439 1



Sbd Bet Yosef Wide Bologna

2 per case / approx. 5.5 lb ea.
/ 11 lb case

51-PBYBOLC



0 51328 70878 9



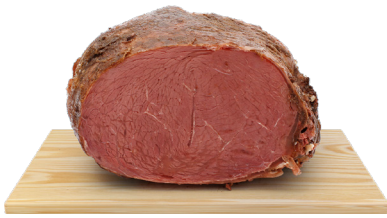
Sbd Bet Yosef Wide Salami

2 per case / approx. 5.5 lb ea.
/ 11 lb case

51-PBYSALC



0 51328 70879 6



Calachel Pastrami

3 per case / approx. 5 lb ea.

71-PPC10



Chuck Pastrami

(Lean)

4 per case / approx. 4 lb ea.

71-PPCH10L



Plate Pastrami

1 per case / approx. 30 lb ea.

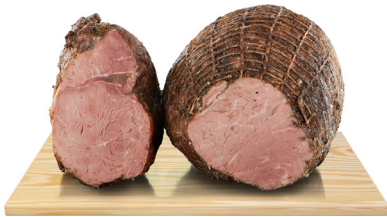
71-PPASTN



Shoulder Pastrami

2 per case / approx. 7 lb ea.

71-PPSH10



SBD Shoulder Pastrami

2 per case / approx. 7 lb ea.

71-PBYPSH10



1st Cut Brisket Pastrami

3 per case / approx. 6 lb ea.

71-PTBP



1st Cut Corned Beef

3 per case / approx. 6 lb ea.

71-PCBC1



SBD 1st Cut Corned Beef

3 per case / approx. 6 lb ea.

71-PBYCBC1



Smoked Beef Fry

3 per case / approx. 7 lb ea.
/ approx. 22 lb case

71-PBFR



Wide Turkey Roll

2 per case / approx. 9 lb ea.
/ 18 lb case

51-PMTRO10



Oven Roasted Turkey Breast

3 per case / approx. 6 lb ea.
/ 18 lb case

71-PCRTB



Cooked Turkey Breast

3 per case / approx. 6 lb ea.
/ 18 lb case

71-PCTB1



Smoked Turkey Breast

3 per case / approx. 6 lb ea.
/ 18 lb case

71-PSBT1



Old Fashioned Smoked Turkey Breast

6 per case / approx. 3 lb ea.
/ 18 lb case

71-PSBTOF



Turkey Pastrami

2 per case / approx. 5 lb ea.
/ 10 lb case

71-PTP10



Premium **Hod Taim** Turkey



Honey Smoked Turkey Breast

3 per case / approx. 6 lb ea.
/ 18 lb case

71-PGHSTB



Gourmet Smoked Turkey Breast

3 per case / approx. 6 lb ea.
/ 18 lb case

71-PGSTB



Mexican Smoked Turkey Breast

3 per case / approx. 6 lb ea.
/ 18 lb case

71-PGMSTB



Romanian Turkey Pastrami

3 per case / approx. 6 lb ea.
/ 18 lb case

71-PRTP



RETAIL FROZEN



Meal Mart Chopped Liver

12 per case / 12 oz ea.
/ 9 lb case

21-RRCLMM



Mrs. Schreiber Chopped Liver (Schreiber)

12 per case / 12 oz ea.
/ 9 lb case

21-RRCLSCH



Chopped Chicken Liver

12 per case / 7 oz ea.
/ 5.25 lb case

21-RRCLL



Raw Frozen Gefilte Fish

12 per case / 20 oz ea.
/ 15 lb case

21-GEF12



Kishke

12 per case / 16 oz ea.
/ 12 lb case

24-KISB1



Parve Kishke

12 per case / 16 oz ea.
/ 12 lb case

24-PKGAN



Hot Beef & Veal Sausage

12 per case / 12 oz ea.
/ 9 lb case

22-BVSH



Sweet Beef & Veal Sausage

12 per case / 12 oz ea.
/ 9 lb case

22-BVSS



FROZEN BAGS



Chick'n Turkey Shapes Nuggets

6 per case / 32 oz ea.
/ 12 lb case

22-PKFSN



Mild Buffalo Wings

6 per case / 32 oz ea.
/ 12 lb case

22-PBWM



Beef Meatballs

6 per case / 26 oz ea.
/ 9.75 lb case

21-PBMB26



Chicken Tenders

6 per case / 26 oz ea.
/ 9.75 lb case

22-PCTB26





Stuffed Cabbage

6 per case / 39 oz ea. / 14.63 lb case

22-SCFP



Chicken / Turkey Nuggets

6 per case / 21 oz ea. / 7.88 lb case

22-CNUGFP



Chicken / Turkey Cutlets

6 per case / 21 oz ea. / 7.88 lb case

22-CHCFP



Sliced Brisket In Gravy

6 per case / 32 oz ea. / 12 lb case

22-CPRBFP



Sliced Shoulder Roast In Gravy

6 per case / 32 oz ea. / 12 lb case

22-CPRSFP



Buffalo Style Chicken Wings

6 per case / 24 oz ea. / 9 lb case

22-BWFP



Matzo Balls Schreiber; (Gebrochts)

6 per case / 26 oz ea. / 9.75 lb case

22-MABFP



Assorted Knishes (2 Potato - 2 Pastrami)

6 per case / 16 oz ea. / 6 lb case

22-PAKFP



Beef Patties

6 per case / 48 oz ea. / 18 lb case

05-PBFPF



Turkey Patties

6 per case / 48 oz ea. / 18 lb case

05-PTFPF



DINNERS



Rib Eye Roast

6 per case / 12 oz ea. / 4.5 lb case

P-MONPRG



Roast Chicken

6 per case / 12 oz ea. / 4.5 lb case

P-MONRCG



Roast Turkey

6 per case / 12 oz ea. / 4.5 lb case

P-MONRTG



Beef Goulash

6 per case / 12 oz ea. / 4.5 lb case

P-MONBGG



Salisbury Steak

6 per case / 12 oz ea. / 4.5 lb case

P-MONSSG



Broiled Salmon

6 per case / 12 oz ea. / 4.5 lb case

P-MONFSG



Braised Veal

6 per case / 12 oz ea. / 4.5 lb case

P-MONBVG



KUGELS

Sweet Potato Kugel

12 per case / 20 oz ea. / 15 lb case

20-SPL



Potato Kugel

12 per case / 18 oz ea. / 13.5 lb case

20-PKLF



Broccoli Kugel

12 per case / 20 oz ea. / 15 lb case

20-BKLF



Apple Kugel

12 per case / 20 oz ea. / 15 lb case

20-AKLF



YAPCHIK



Yapchik

2/6 lb trays / 12 lb case

20-PKPY



KISHKE



Kishke

8 per pack / 4 lb ea. / 32 lb case

71-PKISBY1



Passover Pasmtrami Kishke

8 per pack / 4 lb ea. / 32 lb case

71-PPKB





RETAIL

ALL NATURAL • GRASS FED

RAW BEEF

UNIQUE FLAVOR & TENDERNESS
STEER RAISED ON OPEN RANGES



Ground Beef

12 per case / 16 oz packs
/ 12 lb. case

05-PNGBR



Beef Stew

12 per case / 16 oz packs
/ 12 lb. case

05-NBSR



Amazing Meals

READY-TO-EAT



Bone-in Chicken

with Diced Potatoes

12 per case / 12 oz ea. / 9 lb. case

22-RRCP



Beef Goulash

with Carrots & Broccoli

12 per case / 12 oz ea. / 9 lb. case

22-RRBG



Salmon

with Diced Potatoes & Carrots

12 per case / 12 oz ea. / 9 lb. case

22-RRPS



Stuffed Cabbage

with Beef in Tomato Sauce

12 per case / 12 oz ea. / 9 lb. case

22-RRSC



Chicken Soup

with Matzo Balls

12 per case / 12 oz ea. / 9 lb. case

22-RRSCM



Gefilte Fish

in Jelled Broth

12 per case / 12 oz ea. / 9 lb. case

22-RRGF



Meal Mart
The brand you trust.

Travel Meals *for* Chol Hamoed

No refrigeration needed!

Good food is
always just
two minutes
away.

Amazing Meals™ ready-to-eat
meals always hit the spot, no
matter where you go.

With a variety of delicious meals,
make sure you take an Amazing
Meal™ along next time you
venture out into the wild.



RETAIL DELI



Dry Rub Pastrami

12 per case / 6 oz ea.
/ 4.5 lb. case

50-PMPAS6N



Pepper Crusted Pastrami

12 per case / 6 oz ea.
/ 4.5 lb. case

50-PMPAS6PC



Hot & Spicy Pastrami

12 per case / 6 oz ea.
/ 4.5 lb case

50-MPAS6HS



Corned Beef

12 per case / 6 oz ea.
/ 4.5 lb. case

50-PMCBS6



**SBD Bet Yosef
Corned Beef**

12 per case / 6 oz ea.
/ 4.5 lb. case

50-PBYCBS6



Pastrami

12 per case / 6 oz ea.
/ 4.5 lb. case

50-PMPAS6O



**Passover Smoked
Beef Fry**

12 per case / 4 oz ea.
/ 3 lb. case

50-PBFR



**SBD Bet Yosef
Pastrami**

12 per case / 6 oz ea.
/ 4.5 lb. case

50-PBYPAS6





Bologna

12 per case / 6 oz ea.
/ 4.5 lb. case

50-PMBAL6



Salami

12 per case / 6 oz ea.
/ 4.5 lb. case

50-PMSAL6



Turkey Roll

12 per case / 6 oz ea.
/ 4.5 lb. case

50-PMTRO6



Turkey Pastrami

12 per case / 6 oz ea.
/ 4.5 lb. case

50-PMTPA6



Old Fashioned Smoked Turkey Breast

12 per case / 6 oz ea.
/ 4.5 lb. case

50-PSBTOF6



Hod Taim Gourmet Smoked Turkey Breast

12 per case / 6 oz ea.
/ 4.5 lb. case

50-PGSTB6



Hod Taim Honey Smoked Turkey Breast

12 per case / 6 oz ea.
/ 4.5 lb. case

50-PGHSTB6



Hod Taim Mexican Smoked Turkey Breast

12 per case / 6 oz ea.
/ 4.5 lb. case

50-PGMSTB6



Smoked Turkey Breast

12 per case / 6 oz ea.
/ 4.5 lb. case

50-PMSBT6





Horseradish Red
(Chrein)

12 per case / 16 oz ea.
/ 12 lb. case

21-CHR



Gefilte Fish Jar

12 per case / 24 oz ea.
/ 18 lb. case

07-PFL



Kasher Chicken Liver

12 per case / 8 oz ea.
/ 6 lb. case

22-BCL



Mini Plate Pastrami
(random weight)

12 per case / 12 oz ea.
/ 9 lb. case

71-PPASTNB



Bologna

12 per case / 12 oz ea.
/ 9 lb. case

50-PMBOL12



Salami

12 per case / 12 oz ea.
/ 9 lb. case

50-PMSAL12



BEEF SALAMI

NET WT. 3.20Z (2 LB) 807G



Turkey Roll
(random weight)

12 per case / 1 lb. ea.
/ 12 lb. case

41-PJTR1



Smoked Turkey Legs
(random weight)

12 per case / 1 lb. ea.
/ 12 lb. case

71-PSTL



SBD Salami

6 per case / 2 lb ea.
/ 12 lb. case

50-PBYSAL2





Turkey Franks

12 per case / 12 oz ea.
/ 9 lb. case

50-PMTF1



Beef Franks

12 per case / 12 oz ea.
/ 9 lb. case

10-PNVPI2



**SBD Bet Yosef
Beef Franks**

12 per case / 12 oz ea.
/ 9 lb. case

10-PBYNVP12



**Reduced Fat
Beef Franks**

12 per case / 12 oz ea.
/ 9 lb. case

10-PNRF12



Beef Knackwurst

12 per case / 12 oz ea.
/ 9 lb. case

10-PBKBS



**SBD Bet Yosef
Cocktail Franks**

12 per case / 12 oz ea.
/ 9 lb. case

10-PBYBCF



**Mexican Chorizo
Sausage**

12 per case / 12 oz ea.
/ 9 lb case

10-PMCBS



**Hot Italian
Sausage**

12 per case / 12 oz ea.
/ 9 lb case

10-PHIBS



**Sweet Italian
Sausage**

12 per case / 12 oz ea.
/ 9 lb case

10-PSIBS



Beef Kielbasa

12 per case / 16 oz ea.
/ 12 lb. case

50-PMKOL1



Meal Mart

The brand you trust.

YOU SHOULDN'T HAVE TO EXCHANGE GOOD FOR FREE.

NOW OFFERING DELICIOUS
GLUTEN FREE
— OPTIONS —





@meal_mart





BRANDED FOR QUALITY

ESTD **A** 1946

BEEF | VEAL | LAMB | POULTRY | PROVISIONS

MealMart

Mon Cuisine

Schreiber

Amazing Meals
READY-TO-EAT

PLATTERED™